

DRAFT

SEWRPC Community Assistance Planning Report No. CA-737-280

CITY OF WAUKESHA COMPREHENSIVE PLAN

## **Appendices**

*NOTE: The appendices included in this draft may differ from those in other drafts. Variations to and the addition of charts, figures, maps, and tables, may be made in the interest of completeness and do not indicate changes in the data used to prepare this report.*

DRAFT

SEWRPC Community Assistance Planning Report No. CA-737-280

CITY OF WAUKESHA COMPREHENSIVE PLAN

## **Appendix A**

# **PUBLIC PARTICIPATION PLAN**

**Common Council  
of the  
City of Waukesha, Wisconsin**

**Resolution No. 2022-16**

**Resolution Adopting Public Participation Procedures for Updating the  
Comprehensive Plan for the City of Waukesha**

---

**WHEREAS**, pursuant to Section 66.1001 of the *Wisconsin Statutes*, all units of government which enact or amend zoning, subdivision, or official mapping ordinances on or after January 1, 2010, must adopt a comprehensive plan; and

**WHEREAS**, the City of Waukesha adopted a comprehensive plan under the authority of and procedures established by Section 66.1001 of the *Wisconsin Statutes* on September 11, 2009; and

**WHEREAS**, Section 66.1001(4)(a) of the *Wisconsin Statutes* requires that the Common Council adopt written procedures designed to foster public participation during the preparation or amendment of a comprehensive plan; and

**WHEREAS**, public participation procedures have been developed to foster public participation in the comprehensive plan amendment process.

**NOW, THEREFORE, BE IT RESOLVED** that the Common Council of the City of Waukesha hereby adopts the Public Participation Procedures for Amending the Comprehensive Plan attached hereto as Exhibit A to fulfill the requirements of Section 66.1001(4)(a) of the *Wisconsin Statutes*.

---

Shawn N. Reilly, Mayor

---

Gina L. Kozlik, City Clerk-Treasurer

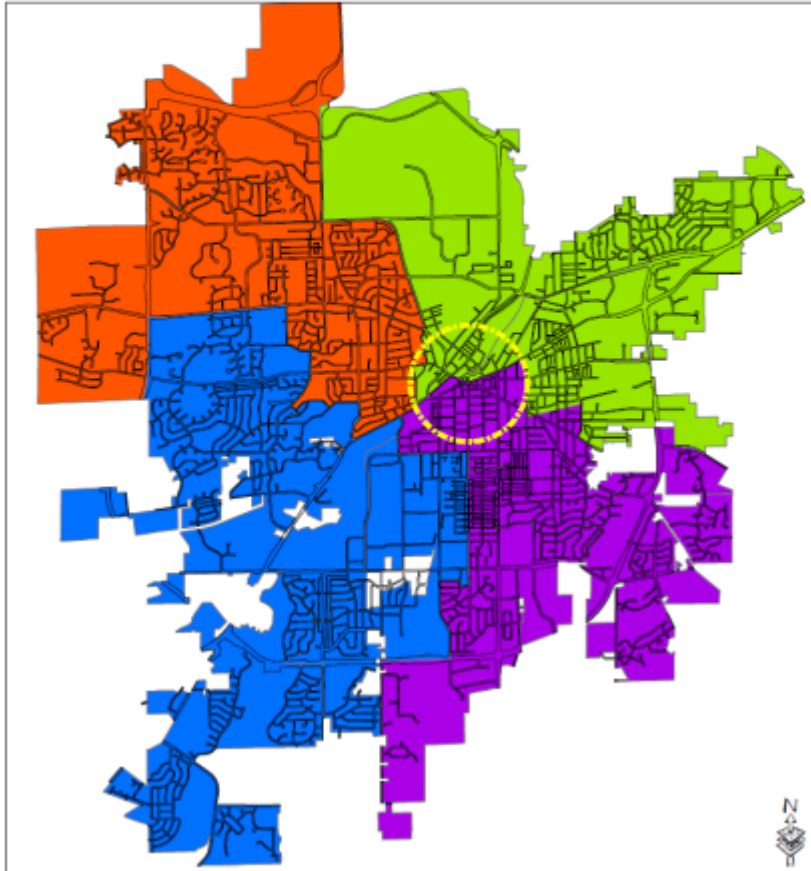
**Exhibit A**  
**2022 Comprehensive Plan**  
**Public Participation Plan**

To foster public participation in the 2022 update of the City of Waukesha Comprehensive Plan, the city will use a multi-faceted approach to maximize public input.

1. City staff added comprehensive plan related questions to the 2022 National Community Survey. The survey was distributed to participants in both Spanish and English. The survey results will be used to guide discussions and in the creation of goals, objectives, and recommendations in the Comprehensive Plan.
2. The city will hold a series of five (5) in-person focus group meetings. The focus groups are for specific areas of the city and were created using aldermanic district groups and are shown in Exhibit B. They are as follows:
  - a. Southeast Focus Group: Aldermanic Districts 8, 9, 10, 11
  - b. Northwest Focus Group: Aldermanic Districts 4, 5, 14, 15
  - c. West & Southwest Focus Group: Aldermanic Districts 6, 7, 12, 13
  - d. Northeast Focus Group: Aldermanic Districts 1, 2, 3
  - e. Downtown Focus Group: Aldermanic Districts 2, 3, 11
3. The city will hold one (1) online/virtual citywide focus group for all residents who cannot make the in-person group meetings or prefer to participate virtually.
4. The city will use all available communication and promotion methods to inform the public about the focus group meetings including the city website, newsletters, social media accounts, emails, and press releases.
5. There will be a Comprehensive Plan Update page on the city's website, which will have ways for residents to submit ideas, suggestions, and questions to staff. This page will also allow residents to review draft chapters and the final draft of the comprehensive plan update prior to adoption.
6. Any discussion and/or action on the comprehensive plan update at the Plan Commission will allow for public input and comments.
7. A Class 1 Public Hearing Notice on the plan adoption will be published in the official paper of record at least 30 days prior to the public hearing in front of the Common Council.
8. For future amendments, a Class 1 Public Hearing Notice on the amendment will be published at least 30 days prior to the public hearing in front of the Common Council.

**Exhibit B**  
**2022 Comprehensive Plan**  
**Focus Group Area Map**

**Comprehensive Plan Update Focus Group Areas**



**Legend**

- Southeast Focus Group
- Northeast Focus Group
- West and Southwest Focus Group
- Northwest Focus Group
- Downtown Focus Group

**Southeast Focus Group:**  
Districts 8, 9, 10, 11

**Northwest Focus Group** Districts  
4, 5, 14, 15

**West & Southwest Focus Group**  
Districts 6, 7, 12, 13

**Northeast Focus Group** Districts  
1, 2, 3

**Downtown Focus Group**  
Districts 2, 3, 11

DRAFT

SEWRPC Community Assistance Planning Report No. CA-737-280

CITY OF WAUKESHA COMPREHENSIVE PLAN

## **Appendix B**

# **PLANS AND REGULATIONS**

*\* NOTE: This table is currently incomplete and will be completed with a comprehensive list of data sources used in the preparation of this plan prior to final publication. The entries presented in this draft are a small sample of the data resources to be included. \**

## Additional Data Resources by Topic

<b>Populations and People<sup>a</sup></b>	
<b>Subject</b>	<b>Table No.</b>
Language Spoken at Home	S1601
Disability Characteristics	S1810
Selected Characteristics of Health Insurance Coverage	S2701

<b>Demographics</b>	
<b>Subject</b>	<b>Table No.</b>

<b>Housing<sup>b</sup></b>	
<b>Subject</b>	<b>Table No.</b>
Children Characteristics	S0901
Households and Families	S1101
Occupancy Characteristics	S2501
Demographic Characteristics for Occupied Housing Units	S2502

<b>Income and Poverty</b>	
<b>Subject</b>	<b>Table No.</b>
Poverty Status in the Past 12 Months	S1701
Poverty Status in the Past 12 Months of Families	S1702
Food Stamps/Supplemental Nutrition Assistance Program (SNAP)	S2201

<b>Employment</b>	
<b>Subject</b>	<b>Table No.</b>
Means of Transportation to Work by Selected Characteristics	S0802
Means of Transportation to Work for Workplace Geography	S0804
Employment Status	S2301

NOTE: Data is from the five-year 2016–2020 American Community Survey (ACSCP5Y2020).

<sup>a</sup> Includes Health.

<sup>b</sup> Includes Families and Living Arrangements.

Source: U.S. Census Bureau and SEWRPC

DRAFT

SEWRPC Community Assistance Planning Report No. CA-737-280

CITY OF WAUKESHA COMPREHENSIVE PLAN

## **Appendix C**

# **ANNOTATED BIBLIOGRAPHY**



Source	Author	Date	Description	Geography	Topics
<b>City</b>					
A Land Use Plan for the City of Waukesha Planning Area: 2010	Southeastern Wisconsin Regional Planning Commission (SEWRPC) and City of Waukesha	July 1993	The first comprehensive land use plan developed for the City, in conjunction with neighboring municipalities. Intended to promote orderly growth and development of the City and surrounding environs.	City of Waukesha	Land Use
Bus Rapid Transit Concept Plan for the Bluemound Road Corridor	Southeastern Wisconsin Regional Planning Commission (SEWRPC)	January 2022	An overview of potential transit enhancements from downtown Waukesha to the Milwaukee Regional Medical Center, prepared at the request of the Cities of Waukesha and Brookfield. Details the extent of improvements, potential benefits of such improvements, funding sources, and next steps for enhancing transit or implementing bus rapid transit (BRT) along the Bluemound Road Corridor.	Cities of Waukesha, Brookfield, and Milwaukee	Transportation, Transit, Land Use
Central City Plan	GRAEF	October 2012	Outlines the City's vision for regenerating the downtown area by building on previous downtown redevelopment plans, which include a 1974 downtown development plan, a 1990 riverfront plan, and a 1998 downtown/central city plan. Encompassing a larger geographic area than previous plans, the plan is designed to guide policy decisions and redevelopment efforts related to the historic downtown and adjacent neighborhoods to the east, south, and northwest. The plan contains goals and recommendations related to complete streets, residential uses and neighborhood rehabilitation, economic vitality, and gateway linkages.	City of Waukesha	Economic Development, Housing, Land Use, Transportation
City of Waukesha Central City Master Plan	GRAEF	October 2012	Proposes ideas and specific actions for regenerating and transforming Waukesha's Downtown and surrounding neighborhoods by attracting more businesses, residents, and visitors to the Central City. Intended to serve as the primary guiding document for redevelopment and policy decisions for Downtown and the adjacent neighborhoods.	City of Waukesha	Comprehensive
City of Waukesha Housing Study and Needs Assessment	Vierbicher	February 2019	Contains contextual data on housing and housing needs and establishes goals and objectives for addressing those needs. Created with the support of a Steering Committee, the study incorporates information from City residents and other stakeholders, including builders/developers, non-profits, realtors, and landlords, obtained through surveys, focus groups, and public meetings.	City of Waukesha	Housing

**Table continued on next page.**

<b>Source</b>	<b>Author</b>	<b>Date</b>	<b>Description</b>	<b>Geography</b>	<b>Topics</b>
City of Waukesha Strategic Plan	Mejorando Group and City of Waukesha	September 2018	Presents strategies and policies to advance the City's economic strength and diversity by retaining and expanding existing businesses, attracting new businesses and high-quality jobs, and promoting quality redevelopment. Also proposes that the City promote attractive and clean neighborhoods with a sense of identity and promote redevelopment while preserving historical assets.	City of Waukesha	Comprehensive
City of Waukesha, Wisconsin Comprehensive Plan	City of Waukesha and Waukesha County University of Wisconsin-Extension	November 2009	A decision-making tool with a framework for establishing and administering sound land use regulations, including an official statement of land use policies and information needed to support and validate those policies, such as planning element inventories and analyses to help identify local needs.	City of Waukesha	Comprehensive
Downtown Waukesha Market Analysis	University of Wisconsin-Madison Extension - Waukesha County	February 2016	A community-led research effort that examined business retention, expansion and recruitment opportunities in downtown Waukesha, WI. It explored economic development initiatives that could be pursued in the downtown study area. In addition, specific business attraction priorities by category were identified. Intended as a resource for existing and prospective entrepreneurs, site selectors, and others seeking a comprehensive analysis to guide downtown economic development.	City of Waukesha	Economic Development, Housing
Haertel Field Neighborhood Revitalization Strategy Area: 2022-2026 Strategic Plan	University of Wisconsin-Madison Extension - Waukesha County and Waukesha County	--	Strategic plan for the Haertel Fields Neighborhood Revitalization Strategy Area (NRSA) to identify and prioritize changes and develop strategies that improve housing, businesses, and resident quality of life. Provides direction for CDBG decision making for federal investments in alignment with HUD guidelines.	City of Waukesha	Housing
Historical and Architectural Resources Survey: 2013-2014	Heritage Research, Ltd.	July 2014	Presents an updated survey of the architectural and historical resources located within the City of Waukesha. Identifies buildings, structures, sited and historic districts that meet the criteria for listing in the National Register of Historic Places.	City of Waukesha	Parks and Natural and Cultural Resources

**Table continued on next page.**

Source	Author	Date	Description	Geography	Topics
Housing Affordability Reports	City of Waukesha	2021, 2022	An annual report that sets forth the City's approach to providing an adequate housing supply to meet existing and forecasted housing demand and promoting development of a range of housing choices suitable for people of all income levels, age groups, and needs. In compliance with State legislation enacted in 2018, the report identifies undeveloped parcels suitable/zoned for residential development, including vacant sites and potential redevelopment sites; data on development activity; an analysis of how regulations impact the cost of developing new housing; and methods for modifying regulations, processes, and fees to promote available housing.  The report relates to implementing the comprehensive plan's housing element as described by Section 66.10013 of the <i>Wisconsin Statutes</i> .	City of Waukesha	Housing
Sunset and West Redevelopment Plan	Cory Clark, Valerie Davis, Adam Kuhn, and Makenzee Loft (University of Wisconsin-Milwaukee School of Architecture and Urban Planning)	May 2020	Presents short- and long-term strategies and recommendations to guide decision-making efforts regarding infrastructure, land use, redevelopment, and transportation improvements. Provide businesses, property owners, and residents with expectations regarding future plans for equitable and desirable improvements to the area.	City of Waukesha	Economic Development, Housing, Land Use, Transportation
Waukesha Area Transit Development Plan: 2023-2027	Southeastern Wisconsin Regional Planning Commission (SEWRPC)	June 2023	This short-range transit development plan (TDP) evaluates the performance of existing Waukesha Metro Transit and Waukesha County Transit systems and recommends transit service policies and improvement proposals to be implemented over a 5-year window.	City of Waukesha and Waukesha County	Transportation - Public Transit
Waukesha Redevelopment Master Plan & Recommendations	Cory Clark, Valerie Davis, Adam Kuhn, and Makenzee Loft	May 2020	Prepared in conjunction with the University of Wisconsin-Milwaukee to guide decision-making efforts regarding infrastructure, land use, redevelopment, and transportation improvements in the Sunset Drive and West Avenue sub-area. Intended to guide businesses, property owner, and resident investments.	City of Waukesha	Economic Development; Housing
West Side Neighborhood Revitalization Strategy Area: 2023-2027 Strategic Plan	University of Wisconsin-Madison Extension - Waukesha County and Waukesha County	--	Strategic plan for the West Side Neighborhood Revitalization Strategy Area (NRSA) to identify and prioritize changes and develop strategies that improve housing, businesses, and resident quality of life. Provides direction for CDBG decision making for federal investments in alignment with HUD guidelines.	City of Waukesha	Housing

Table continued on next page.

Source	Author	Date	Description	Geography	Topics
<b>County</b>					
A Comprehensive Development Plan for Waukesha County	Waukesha County Department of Parks and Land Use, University of Wisconsin-Madison Extension - Waukesha County, Waukesha County Municipalities	February 2009	A multi-jurisdictional comprehensive plan drafted in coordination with 37 municipalities to address countywide issues and local concerns, to improve intergovernmental cooperation, and to utilize resources efficiently	Waukesha County	Comprehensive
Waukesha County Sustainability Plan	Waukesha County	September 2018	A plan for furthering the sustainability of the County's internal operations and facilities, which updates the County's 2010-2014 sustainability plan.	Waukesha County	Natural Resources
Waukesha County Jurisdictional Highway System Plan: 2010	SEWRPC	December 1995	Provides a review and reevaluation, and recommendations as to which level and agency of government should have jurisdictional responsibilities for each segment of arterial street and highway in the County with a design year of 2035. Refines and amends the functional improvements (new arterial facilities and widening of existing facilities) recommended under the 2035 regional transportation plan.	Waukesha County	Transportation - Highways
Building Blocks	Wisconsin Policy Forum	July 2023	Understanding and responding to Waukesha County's housing affordability challenges	County	Housing
<b>Regional</b>					
Regional Water Quality Management Plan	Southeastern Wisconsin Regional Planning Commission (SEWRPC)	--	Establishes recommendations for the control of water pollution from both point and nonpoint sources. Provides the basis for a local government's eligibility for Federal and State resources for developing and redeveloping their sanitary sewer system; for issuance of waste discharge permits by the DNR; State review and approval of locally proposed sanitary sewer extensions.	Southeastern Wisconsin Region	Parks and Natural and Cultural Resources
Southeastern Wisconsin Comprehensive Economic Development Strategy: 2021-2025	Milwaukee 7 Regional Economic Development Partnership and SEWRPC	September 2021	Presents a strategy-driven plan for regional economic development created with input from private and public sector stakeholders. Promotes regional collaboration and innovation as a competitive advantage for Southeastern Wisconsin communities.	Southeastern Wisconsin Region	Economic Development
VISION 2050	Southeastern Wisconsin Regional Planning Commission	December 2016	Public Transit; Bicycle & Pedestrian: Transportation Systems Management (TSM) and Travel Demand Management (TDM); Arterial Streets and Highways; Freight Transportation	Southeastern Wisconsin Region	Land Use and Transportation

Table continued on next page.

<b>Source</b>	<b>Author</b>	<b>Date</b>	<b>Description</b>	<b>Geography</b>	<b>Topics</b>
Regional Natural Areas Plan, Planning Report No. 42	Southeastern Wisconsin Regional Planning Commission	Under Development	An element of the regional comprehensive plan that supplements regional land use and park and open space plan recommendations relative to promoting biodiversity and preserving open space. Contains a comprehensive inventory of the Region's most significant remaining natural, geological, and other resources, originally conducted in 1994 and updated in 2009. The plan identifies the Region's remaining high-quality natural, geological, and other resource areas of significance, which are vital to supporting endangered, threatened, and rare plant and animal species in the Region.	Southeastern Wisconsin Region	Natural Resources
A Regional Broadband Telecommunications Plan for Southeastern Wisconsin (Telecommunications – 1)	SEWRPC Memorandum Report No. 164	September 2005	The first report described the importance and potential application for high capacity telecommunication services in meeting growing needs in such areas as public safety emergency response, freeway traffic management, home health care, and environmental monitoring.	Southeastern Wisconsin Region	Utilities - Communications
A Regional Broadband Telecommunications Plan for Southeastern Wisconsin (Telecommunications – 2)	SEWRPC Planning Report No. 51	September 2006	The second report set forth recommendations concerning the development of high capacity wireless telecommunications services within the Region. It recognized that, like transportation planning, telecommunications planning relates to infrastructure networks. Such planning differs, however, from public infrastructure system planning in two important respects: one, the rapid pace of technological change in telecommunications; and two, the role of private carriers in plan implementation.	Southeastern Wisconsin Region	Utilities - Communications

**Table continued on next page.**

<b>Source</b>	<b>Author</b>	<b>Date</b>	<b>Description</b>	<b>Geography</b>	<b>Topics</b>
A Regional Broadband Telecommunications Plan for Southeastern Wisconsin (Telecommunications - 3)	SEWRPC Planning Report No. 53	October 2007	The third report integrated the wireless service plan set forth in SEWRPC Planning Report No. 51 with a wireline services plan. The report presents background information about the Regional Planning Commission, the regional planning concept in Southeastern Wisconsin, and about the seven-county planning Region. It sets forth the basic principles and concepts underlying the regional telecommunications planning process; and describes that process, and the technologies involved in both wireless and wireline telecommunications networks. Importantly, this report sets forth a set of eight objectives that should be met by the telecommunications system of the Region together with supporting principles and standards. These objectives relate to system performance, as measured by data transmission rates, availability, quality of voice transmission, error rate and packet loss; universality of service; redundancy; antenna site number optimization; applications to be served; cost minimization; antenna site aesthetics and safety; and potential for coordination with the development and use of public safety telecommunication networks. The report presents information on the geographic coverage areas and telecommunications service offerings of both wireline and wireless service providers within the Region	Southeastern Wisconsin Region	Utilities - Communications
Comprehensive Economic Development Strategy (CEDS) Report	Southeastern Wisconsin Regional Planning Commission	September 2021	The purpose of the Comprehensive Economic Development Strategy (CEDS) is to bring together members of the public and private sectors to develop a strategy-driven plan for regional economic development. A new CEDS should be prepared at least every five years for communities and organizations within their respective region to qualify for funding through the U.S. Economic Development Administration's (EDA) Public Works and Economic Adjustment assistance programs. Led by M7 with assistance from SEWRPC, development of the 2021-2025 CEDS for Southeastern Wisconsin was underway as this report was being prepared.	Region	Economic Development

**Table continued on next page.**

Source	Author	Date	Description	Geography	Topics
<b>State</b>					
A Regional Housing Plan for Southeastern Wisconsin: 2035	Southeastern Wisconsin Regional Planning Commission (SEWRPC)	March 2013	<p>Contains recommendations to support public and private sector efforts to address housing-related issues in the Region. Intended to guide public policy for providing sufficient, suitable housing. Considerations relate to housing development practices; creating cost-appropriate housing for households of all income levels; overcoming housing discrimination and the concentration of minority and low-income populations in certain areas; establishing a jobs-housing balance; ADA-accessible housing; and the need for subsidized and tax-credit housing.</p> <p>Units of government and agencies within the Region are recommended to endorse the plan and integrate plan findings and recommendations into their community-, housing- and land use-related planning, regulations, and other efforts</p>	Southeastern Wisconsin Region	Housing
Wisconsin Rail Plan 2050	Wisconsin Department of Transportation	July 2023	This statewide plan identifies the vision, goals, objectives, policies, and actions to guide future rail-related investments in Wisconsin. Includes freight rail, state-owned passenger rail, intercity passenger rail, and commuter rail through 2050.	Wisconsin	Transportation - Railways
Wisconsin State Freight Plan 2023	Wisconsin Department of Transportation	July 2023	Statewide long-range multimodal freight plan linking freight transportation needs to department policy and programming, informs future transportation investment, and provides an implementation plan to advance the safe and efficient movement of freight.	Wisconsin	Transportation - Freight
Wisconsin Active Transportation Plan 2050	Wisconsin Department of Transportation	Under Development	A statewide long-range plan focused on human-powered modes of transportation, such as bicycling and walking. This plan will evaluate active transportation opportunities and needs, resulting in policies and actions that will align with and further Connect 2050.	Wisconsin	Transportation - Bicycle, Pedestrian, and other active travel modes
WisDOT Connect 2050 Statewide Long-Range Multimodal Transportation Plan	Wisconsin Department of Transportation	May 2022	Connect 2050 is Wisconsin's statewide, multimodal, long-range plan, intended to facilitate decision-making for improvements to and investments in all types of transportation throughout the state through 2050.	Wisconsin	Transportation - Multimodal
<b>Federal</b>					
Amtrak Connects US: Amtrak's Vision For Improving Transportation Across America	National Railway Passenger Corporation (Amtrak)	June 2021	A national comprehensive plan to develop and expand passenger railway infrastructure. Proposes federal investment of \$75 billion over fifteen years for expansion of service to new communities and routes.	National	Transportation - Railways

DRAFT

SEWRPC Community Assistance Planning Report No. CA-737-280

CITY OF WAUKESHA COMPREHENSIVE PLAN

## **Appendix D**

# **INTRODUCTION AND BACKGROUND DATA**



## Historic and Projected Population Levels in the City, County, and Region: 1920-2020

Year	City of Waukesha			Waukesha County			Southeastern Wisconsin Region		
	Population	Change from Preceding Census		Population	Change from Preceding Census		Population	Change from Preceding Census	
		Number	Percent		Number	Percent		Number	Percent
1920	12,558	3,818	43.7	42,612	5,512	14.9	783,691	152,530	24.2
1930	17,176	4,618	36.8	52,358	9,746	22.9	1,006,118	222,427	28.4
1940	19,242	2,066	12.0	62,744	10,386	19.8	1,067,699	61,581	6.1
1950	21,233	1,991	10.3	85,901	23,157	36.9	1,240,618	172,919	16.2
1960	30,004	8,771	41.3	158,249	72,348	84.2	1,573,614	332,996	26.8
1970	40,271	10,267	34.2	231,335	73,086	46.2	1,756,083	182,469	11.6
1980	50,365	10,094	25.1	280,203	48,868	21.1	1,764,796	8,713	0.5
1990	56,894	6,529	13.0	304,715	24,512	8.7	1,810,364	45,568	2.6
2000	64,825	7,931	13.9	360,767	56,052	18.4	1,931,165	120,801	6.7
2010	70,718	5,893	9.1	389,891	29,124	8.1	2,019,970	88,805	4.6
2020	71,158	440	0.6	406,978	17,087	4.4	2,048,087	28,117	1.4

Source: U.S. Bureau of the Census and SEWRPC.

**Projected Population Levels in the City,  
County, and Region: 2020-2050**

	<b>Population</b>			
	2020	2050	Projected Change 2020-2050	
			Number	Percent
City	71,158	96,290	25,132	35.3
County	406,978	481,400	74,422	18.3
Region	2,048,087	2,421,600	373,513	18.2

Source: U.S. Census Bureau and SEWRPC

## Population Distribution by Age in the City, County, and Region: 2020

Age	City of Waukesha		Waukesha County		Southeastern Wisconsin Region	
	Population	Percent of Total	Population	Percent of Total	Population	Percent of Total
Under 5 Years	3,811	5.3	20,670	5.1	124,055	6.1
5 to 9 Years	3,657	5.0	23,327	5.8	127,954	6.3
10 to 14 Years	4,123	5.7	25,626	6.4	101,861	5.0
15 to 19 Years	5,403	7.5	26,182	6.5	135,380	6.7
20 to 24 Years	6,593	9.1	22,083	5.5	131,985	6.5
25 to 29 Years	5,860	8.1	19,894	4.9	140,668	6.9
30 to 34 Years	5,215	7.2	22,312	5.5	136,331	6.7
35 to 39 Years	4,667	6.4	25,070	6.2	133,207	6.5
40 to 44 Years	4,719	6.5	24,702	6.1	120,973	5.9
45 to 49 Years	4,065	5.6	26,059	6.5	125,203	6.1
50 to 54 Years	4,508	6.2	29,296	7.3	135,244	6.6
55 to 59 Years	5,271	7.3	33,397	8.3	147,885	7.2
60 to 64 Years	4,183	5.8	29,090	7.2	130,584	6.4
65 to 69 Years	3,566	4.9	25,455	6.3	108,558	5.3
70 to 74 Years	2,027	2.8	17,634	4.4	78,188	3.8
75 to 79 Years	1,638	2.3	11,613	2.9	50,004	2.4
80 to 84 Years	1,832	2.5	9,660	2.4	37,557	1.8
85 Years and Over	1,281	1.8	10,567	2.6	46,295	2.3
<b>Total</b>	<b>72,419</b>	<b>100.0</b>	<b>402,637</b>	<b>100.0</b>	<b>2,044,773</b>	<b>100.0</b>

Source: U.S. Census Bureau and SEWRPC

**Population Distribution by Sex in the City, County, and Region: 2020**

<b>Sex</b>	<b>City of Waukesha</b>		<b>Waukesha County</b>		<b>Southeastern Wisconsin Region</b>	
	Population	Percent of Total	Population	Percent of Total	Population	Percent of Total
Female	37,036	51.1	204,475	50.8	1,043,773	51.0
Male	35,383	48.9	198,162	49.2	1,001,000	49.0
Total	72,419	100.0	402,637	100.0	2,044,773	100.0

Source: U.S. Census Bureau and SEWRPC

## City of Waukesha Resident Population by Age and Sex: 2020

Age	Female		Male		Total	
	Population	Percent of Total	Population	Percent of Total	Population	Percent of Total
Under 5 Years	1,896	2.6	1,915	2.6	3,811	5.3
5 to 9 Years	1,843	2.5	1,814	2.5	3,657	5.0
10 to 14 Years	2,158	3.0	1,965	2.7	4,123	5.7
15 to 19 Years	3,118	4.3	2,285	3.2	5,403	7.5
20 to 24 Years	3,273	4.5	3,320	4.6	6,593	9.1
25 to 34 Years	5,411	7.5	5,664	7.8	11,075	15.3
35 to 44 Years	4,648	6.4	4,738	6.5	9,386	13.0
45 to 54 Years	4,380	6.0	4,193	5.8	8,573	11.8
55 to 64 Years	4,634	6.4	4,820	6.7	9,454	13.1
65 to 74 Years	3,001	4.1	2,592	3.6	5,593	7.7
75 to 84 Years	1,786	2.5	1,684	2.3	3,470	4.8
85 Years and Over	888	1.2	393	0.5	1,281	1.8
Total	37,036	51.1	35,383	48.9	72,419	100.0

Source: U.S. Census Bureau and SEWRPC

**Population by Race/Ethnicity in the City, County, and Region: 2020**

	<b>Not Hispanic</b>							<b>Hispanic or Latino</b>	<b>Total</b>
	White Alone	Black or African American Alone	American Indian and Alaska Native Alone	Asian Alone	Native Hawaiian and Other Pacific Islander Alone	Some Other Race Alone	Two or More Races		
City	53,409	2,395	177	2,382	40	205	2,571	9,979	71,158
County	347,922	6,648	807	15,616	121	1,138	12,891	21,835	406,978
Region	1,355,080	285,396	6,262	71,887	549	7,703	73,426	247,784	2,048,087

Source: U.S. Census Bureau and SEWRPC

## Changes in Population by Race/Ethnicity in the City of Waukesha: 2010 and 2020

Race/Ethnicity	2010		2020	
	Number	Percent	Number	Percent
Not Hispanic or Latino				
White Alone	56,807	81.2	56,913	78.6
Black or African American	1,558	2.2	2,324	3.2
American Indian and Alaska Native Alone	149	0.2	81	0.1
Asian Alone	2,315	3.3	2,275	3.1
Native Hawaiian and Other Pacific Islander Alone	0	0	38	0.1
Some Other Race Alone	57	0.1	744	1.0
Two or More Races	999	1.4	1,266	1.7
Hispanic or Latino	8,061	11.5	8,778	12.1
<b>Total Population</b>	<b>69,946</b>	<b>100.0</b>	<b>72,419</b>	<b>100.0</b>

Source: U.S. Census Bureau American Community Survey 5-year Estimates and SEWRPC

## Residents with a Disability by Type of Disability in the City, County, and Region: 2020

Disability Type	City of Waukesha		Waukesha County		Southeastern Wisconsin Region	
	Number	Percent	Number	Percent	Number	Percent
Hearing Difficulty	1,896	2.6	13,064	3.3	61,579	3.0
Vision Difficulty	1,064	1.5	5,255	1.3	38,890	1.9
Cognitive Difficulty	2,998	4.4	12,301	3.2	90,177	4.5
Ambulatory Difficulty	4,530	6.7	18,726	4.9	115,962	5.7
Self-Care Difficulty	1,474	2.2	6,402	1.7	49,908	2.5
Independent Living Difficulty	2,574	4.5	12,259	3.9	86,670	4.3
Total <sup>a</sup>	8,414	11.8	38,409	9.6	235,335	11.6

<sup>a</sup> Total civilian noninstitutionalized population with a disability. One person may have identified themselves as experiencing more than one disability.

Source: U.S. Census Bureau American Community Survey 5-year Estimates and SEWRPC



## Residents with a Disability by Race/Ethnicity in the City, County, and Region: 2020

Race/Ethnicity	City of Waukesha		Waukesha County		Southeastern Wisconsin Region	
	Number	Percent	Number	Percent	Number	Percent
Not Hispanic or Latino						
White Alone	6,089	10.8	33,413	9.5	161,905	11.7
Black or African American	184	8.3	423	7.2	40,823	14.2
American Indian and Alaska Native Alone	39	24.8	116	13.8	1,352	16.3
Asian Alone	259	11.3	736	4.9	4,452	6.6
Native Hawaiian and Other Pacific Islander Alone	0	0.0	17	14.5	129	16.5
Some Other Race Alone	932	48.2	1,633	31.0	7,908	9.9
Two or More Races	228	9.9	657	6.9	8,363	9.9
Hispanic or Latino	934	10.7	1,891	9.7	20,677	8.9

Source: U.S. Census Bureau American Community Survey 5-year Estimates and SEWRPC

## Residents with a Disability by Age in the City, County, and Region: 2020

Age	City of Waukesha		Waukesha County		Southeastern Wisconsin Region	
	Number	Percent	Number	Percent	Number	Percent
Under 5 Years	0	0.0	114	0.6	978	0.8
5 to 17 Years	595	5.6	2,614	4.0	18,644	5.4
18 to 34 Years	961	4.9	3,562	4.9	28,666	6.3
35 to 64 Years	3,040	11.2	11,423	6.8	87,698	11.1
65 to 74 Years	1,251	22.6	7,573	17.7	41,155	22.2
75 Years and Over	2,567	55.8	13,123	42.6	58,194	45.5

Source: U.S. Census Bureau American Community Survey 5-year Estimates and SEWRPC

**Health Insurance Coverage of Residents in the City, County, and Region: 2020**

	<b>City of Waukesha</b>		<b>Waukesha County</b>		<b>Southeastern Wisconsin Region</b>	
	Number	Percent	Number	Percent	Number	Percent
Insured	67,237	93.9	386,999	96.7	1,909,460	94.3
Uninsured	4,365	6.1	13,019	3.3	115,135	5.7
Total <sup>a</sup>	71,602	100.0	400,018	100.0	2,024,595	100.0

<sup>a</sup> The data provided in this table reflects the civilian noninstitutionalized population.

Source: U.S. Census Bureau American Community Survey 5-year Estimates and SEWRPC

## Health Insurance Coverage of Residents by Race/Ethnicity in the City, County, and Region: 2020

	City of Waukesha				Waukesha County				Southeastern Wisconsin Region			
	Insured	Percent Insured	Uninsured	Percent Uninsured	Insured	Percent Insured	Uninsured	Percent Uninsured	Insured	Percent Insured	Uninsured	Percent Uninsured
Not Hispanic or Latino												
White Alone	54,110	96.0	2,255	4.0	340,746	97.3	9,440	2.7	1,329,439	96.5	48,797	3.5
Black or African American	2,028	91.6	186	8.4	5,527	93.4	388	6.6	267,004	92.8	20,693	7.2
American Indian and Alaska Native Alone	125	79.6	32	20.4	738	87.8	103	12.2	7,318	88.5	952	11.5
Asian Alone	2,259	98.3	39	1.7	14,744	97.4	397	2.6	62,367	93.0	4,699	7.0
Native Hawaiian and Other Pacific Islander Alone	38	100.0	0	0.0	110	94.0	7	6.0	690	88.3	91	11.7
Some Other Race Alone	1,325	68.5	610	31.5	4,302	81.7	966	18.3	64,067	80.2	15,830	19.8
Two or More Races	1,863	80.7	446	19.3	8,830	93.3	636	6.7	77,497	92.0	6,781	8.0
Hispanic or Latino	6,849	78.8	1,843	21.2	16,890	86.8	2,570	13.2	194,784	83.7	38,022	16.3

Source: U.S. Census Bureau American Community Survey 5-year Estimates and SEWRPC

**Educational Attainment for Residents in the City, County, and Region: 2020**

Level of Educational Attainment	City of Waukesha		Waukesha County		Southeastern Wisconsin Region	
	Number	Percent	Number	Percent	Number	Percent
No High School Diploma	3,717	7.7	10,637	3.8	121,385	8.8
High School Graduate	11,336	23.5	63,919	22.7	381,209	27.6
Some College or Associates Degree	14,855	30.8	82,126	29.1	417,443	30.2
Bachelor's Degree	12,413	25.7	82,156	29.1	299,548	21.7
Master's Degree or Higher	5,967	12.4	43,301	15.3	163,829	11.8
Total	48,288	100.0	282,139	100.0	1,383,414	100.0

Source: U.S. Census Bureau and SEWRPC

## Educational Attainment by Race/Ethnicity in the City of Waukesha: 2020

Level of Educational Attainment	Not Hispanic					Hispanic or Latino
	White Alone	Black or African American Alone	Asian Alone	Some Other Race Alone	Two or More Races	
No High School Diploma	2,822	299	73	677	147	1,678
High School Graduate	9,736	273	155	675	159	1,089
Some College or Associates Degree	13,838	381	204	2,049	362	1,257
Bachelor's Degree or Higher	17,084	198	1,116	1,035	447	763
<b>Total</b>	<b>43,480</b>	<b>1,151</b>	<b>1,548</b>	<b>4,436</b>	<b>1,115</b>	<b>4,787</b>

Source: U.S. Census Bureau American Community Survey 5-year Estimates and SEWRPC

## Labor Force Participation by Age in the City, County, and Region: 2020

Age	City of Waukesha			Waukesha County			Southeastern Wisconsin Region		
	In Labor Force		Not in Labor Force	In Labor Force		Not in Labor Force	In Labor Force		Not in Labor Force
	Employed	Unemployed		Employed	Unemployed		Employed	Unemployed	
16 to 19 Years	2,516	120	1,950	11,136	1083	8,798	47,373	6,065	55,132
20 to 21 Years	1,957	226	300	6,662	515	1,346	36,877	3,366	14,023
22 to 24 Years	3,337	67	706	10,943	597	1,959	58,886	4,505	14,158
25 to 29 Years	4,875	169	791	16,872	696	2,253	112,943	6,348	21,108
30 to 34 Years	4,451	72	692	19,731	414	2,167	112,319	4,875	19,018
35 to 44 Years	8,101	330	931	43,540	1,093	5,096	210,503	7,755	35,648
45 to 54 Years	7,373	149	1,051	47,917	1,016	6,381	211,973	6,746	41,641
55 to 59 Years	4,264	102	905	26,651	688	6,058	109,009	3,418	35,458
60 and 61 Years	1,318	41	587	9,021	222	3,598	36,866	1,136	18,123
62 to 64 Years	1,426	19	792	9,852	202	6,195	39,914	1,200	33,345
65 to 69 Years	1,184	0	2,382	8,670	101	16,684	32,951	761	74,846
70 to 74 Years	387	11	1,629	2,774	85	14,775	12,116	380	65,692
75 Years and Over	243	0	4,508	1,984	19	29,837	8,270	171	125,415
<b>Total</b>	<b>41,432</b>	<b>1,306</b>	<b>17,224</b>	<b>215,753</b>	<b>6,731</b>	<b>105,147</b>	<b>1,030,000</b>	<b>46,726</b>	<b>553,607</b>

Note: For the purposes of this table, labor force includes the civilian labor force and does not include the those employed by the Armed Forces.

Source: U.S. Census Bureau and SEWRPC

## Historic Household Levels in the City, County, and Region: 1960-2020

Year	City of Waukesha			Waukesha County			Southeastern Wisconsin Region		
	Households	Change from Preceding Census		Households	Change from Preceding Census		Households	Change from Preceding Census	
		Number	Percent		Number	Percent		Number	Percent
1960	8,572	--	--	42,394	--	--	465,913	--	--
1970	11,748	3,176	37.1	61,935	19,541	46.1	536,486	70,573	15.1
1980	17,644	5,896	50.2	88,552	26,617	43	627,955	91,469	17.0
1990	21,235	3,591	20.4	105,990	17,438	19.7	676,107	48,152	7.7
2000	25,663	4,428	20.9	135,229	29,239	27.6	749,039	72,932	10.8
2010	28,295	2,632	10.3	152,663	17,434	12.9	800,087	51,048	6.8
2020	29,704	1,409	5.0	172,177	19,514	12.8	903,852	103,765	13.0

Source: U.S. Bureau of the Census and SEWRPC.



**Projected Household Levels in the City, County, and Region: 2020-2050**

	<b>Households</b>			
	2020	2050	Projected Change 2020-2050	
			Number	Percent
City	29,704	39,450	9,746	32.8
County	172,177	195,900	23,723	13.8
Region	903,852	1,001,200	97,348	10.8

Source: U.S. Census Bureau and SEWRPC

## Household Composition Trends in the City, County, and Region: 2010, 2015, and 2019

Household Composition	City of Waukesha			Waukesha County			Southeastern Wisconsin Region		
	2010	2015	2019	2010	2015	2019	2010	2015	2019
Family Households									
2-Person	7,586	7,640	7,970	49,145	51,782	54,237	220,993	227,003	233,303
3-Person	4,313	4,314	4,114	22,824	22,522	22,028	114,322	113,172	110,320
4-Person	3,627	3,380	3,539	23,983	22,219	21,719	103,716	98,281	97,833
5-Person	1,720	1,407	1,464	9,811	8,743	8,919	45,205	43,661	43,325
6-Person	374	421	389	2,337	2,215	2,643	15,941	15,318	15,091
7-or-More Person	183	159	216	1,050	1,025	877	8,554	8,615	8,051
Family Household Subtotal	17,803	17,321	17,692	109,150	108,506	110,423	508,731	506,050	507,923
Nonfamily Households									
1-Person	8,844	8,653	9,376	35,416	38,900	40,086	232,607	240,958	247,885
2-Person	1,644	1,755	1,972	5,849	6,407	7,395	43,099	45,499	48,506
3-Person	228	407	321	594	875	704	6,081	6,389	5,846
4-Person	29	132	25	112	211	144	1,657	1,685	2,005
5-Person	14	0	20	40	21	50	323	511	547
6-Person	0	63	0	0	71	6	182	195	192
7-or-More Person	0	0	0	0	0	0	21	20	147
Nonfamily Household Subtotal	10,759	11,010	11,714	42,011	46,485	48,385	283,970	295,257	305,128
<b>Total</b>	<b>28,562</b>	<b>28,331</b>	<b>29,406</b>	<b>151,161</b>	<b>154,991</b>	<b>158,808</b>	<b>792,701</b>	<b>801,307</b>	<b>813,051</b>

Source: U.S. Census Bureau American Community Survey 5-year Estimates and SEWRPC

## Household Size in the City of Waukesha: 2010, 2015, and 2019

Household Size	2010		2015		2019	
	Number	Percent of Total	Number	Percent of Total	Number	Percent of Total
1-Person	8,844	31.9	8,653	30.5	9,376	31.0
2-Person	9,230	33.8	9,395	33.2	9,942	32.3
3- and 4-Person	8,197	27.2	8,233	29.1	7,999	28.7
5 or More Person	2,291	7.1	2,050	7.2	2,089	8.0
Total	28,562	100.0	28,331	100.0	29,406	100.0

Source: U.S. Census Bureau American Community Survey 5-year Estimates and SEWRPC

## Household Income in the City, County, and Region: 2019

Income	City of Waukesha		Waukesha County		Southeastern Wisconsin Region	
	Households	Percent of Total	Households	Percent of Total	Households	Percent of Total
Less than \$10,000	1,784	5.9	4,247	2.7	43,402	5.3
\$10,000 to \$14,999	951	3.1	3,175	2.0	31,620	3.9
\$15,000 to \$19,999	963	3.2	3,918	2.4	36,063	4.4
\$20,000 to \$24,999	1,349	4.4	5,642	3.5	37,932	4.6
\$25,000 to \$29,999	598	2.0	4,049	2.5	31,588	3.8
\$30,000 to \$34,999	904	3.0	4,231	2.6	34,505	4.2
\$35,000 to \$39,999	1,359	4.5	4,348	2.7	33,664	4.1
\$40,000 to \$44,999	1,253	4.1	5,272	3.3	36,138	4.4
\$45,000 to \$49,999	1,129	3.7	4,585	2.9	34,423	4.2
\$50,000 to \$59,999	1,611	5.3	9,265	5.8	57,857	7.0
\$60,000 to \$74,999	4,222	13.9	16,170	10.1	84,981	10.4
\$75,000 to \$99,999	4,198	13.8	22,860	14.2	109,449	13.3
\$100,000 to \$124,999	3,409	11.2	20,049	12.5	84,510	10.3
\$125,000 to \$149,999	2,792	9.2	14,202	8.8	54,451	6.6
\$150,000 to \$199,999	2,246	7.4	19,462	12.1	59,082	7.2
\$200,000 or More	1,596	5.3	19,160	11.9	51,577	6.3
Total	30,364	100.0	160,635	100.0	821,242	100.0

Source: U.S. Census Bureau American Community Survey 5-year Estimates and SEWRPC

**Median Household Income Levels Over Time in the City, County, and the State: 2010, 2015, and 2019**

Year	City of Waukesha			Waukesha County			Southeastern Wisconsin Region		
	Median Household Income (\$)	Change		Median Household Income (\$)	Change		Median Household Income (\$)	Change	
		Number	Percent		Number	Percent		Number	Percent
2010	56,248	--	--	75,064	--	--	51,914	--	--
2015	59,547	3,299	5.9	76,545	1,481	2.0	53,889	1,975	3.8
2019	65,260	5,713	9.6	87,277	10,732	14.0	62,843	8,954	16.6

Source: U.S. Census Bureau American Community Survey 5-year Estimates and SEWRPC

**Poverty Status in the Past Year for Households in the City, County, and Region: 2020**

<b>Poverty Status</b>	<b>City of Waukesha</b>		<b>Waukesha County</b>		<b>Southeastern Wisconsin Region</b>	
	Number of Households	Percent	Number of Households	Percent	Number of Households	Percent
Below Poverty Level	2,908	9.8%	8,237	5.2%	100054	12.2%
At or Above Poverty Level	26,796	90.2%	151,543	94.8%	718039	87.8%

Source: U.S. Census Bureau American Community Survey 5-year Estimates and SEWRPC

## Households Experiencing Poverty in the City, County, and Region by Race/Ethnicity: 2020

Race/Ethnicity	City of Waukesha				Waukesha County				Southeastern Wisconsin Region			
	Number	Percent	Households Receiving SNAP Benefits	Percent	Number of Households	Percent	Households Receiving SNAP Benefits	Percent	Number of Households	Percent	Households Receiving SNAP Benefits	Percent
Not Hispanic or Latino												
White Alone	24,426	82.2	1,606	62.7	145,419	91.0	5,133	80.0	605,592	74.0	40,590	56.1
Black or African American	622	2.1	320	12.5	1,808	1.1	390	6.1	110,740	13.5	43,065	47.9
American Indian and Alaska Native Alone	59	0.2	1	0.0	241	0.2	25	0.4	3,390	0.4	700	0.7
Asian Alone	907	3.1	54	2.1	5,024	3.1	170	2.6	20,430	2.5	2,627	2.7
Native Hawaiian and Other Pacific Islander Alone	38	0.1	0	0.0	82	0.1	0	0.0	212	0.0	58	0.1
Some Other Race Alone	1,079	3.6	12	0.5	1,593	1.0	23	0.4	24,583	3.0	5,878	6.0
Two or More Races	635	2.1	75	2.9	2,080	1.3	107	1.7	19,521	2.4	4,223	4.0
Hispanic or Latino	2,660	9.0	507	19.8	5,109	3.2	615	9.6	65,448	8.0	15,914	15.1

Source: U.S. Census Bureau and SEWRPC

**Household Vehicle Availability in the City and County: 2020**

<b>Vehicles Available</b>	<b>City of Waukesha</b>		<b>Waukesha County</b>	
	Number	Percent	Number	Percent
Occupied Housing Units	29,704	--	159,780	--
No Vehicles	1,598	5.4	5,547	3.5
1 Vehicle	11,003	37.0	43,444	27.2
2 Vehicles	12,124	40.8	72,686	45.5
3 or More Vehicles	4,979	16.8	38,103	23.8

Source: U.S. Census Bureau American Community Survey 5-year Estimates and SEWRPC



## Geographic Mobility in the City, County, and Region: 2020

	City of Waukesha		Waukesha County		Southeastern Wisconsin Region	
	Number	Percent	Number	Percent	Number	Percent
Place of Residence One Year Ago <sup>a</sup>						
Same House	59,931	83.7	353,910	88.8	1,744,703	86.3
Different House (in the US or Abroad)	11,641	16.3	44,621	11.2	277,381	13.7
Different House in the US	11,200	15.6	43,521	10.9	270,389	13.4
Same County	5,844	8.2	20,799	5.2	174,854	8.6
Different County	5,356	7.5	22,722	5.7	95,535	4.7
Same State	3,497	4.9	17,029	4.3	59,224	2.9
Different State	1,859	2.6	5,693	1.4	36,311	1.8
Abroad	441	0.6	1,100	0.3	6,992	0.3
Place of Birth						
Native	66,931	92.4	381,258	94.7	1,899,444	92.9
Born in United States	66,274	91.5	378,085	93.9	1,871,445	91.5
State of Residence	51,993	71.8	301,910	75.0	1,420,638	69.5
Different State	14,281	19.7	76,175	18.9	450,807	22.0
Born in Puerto Rico, U.S. Island Areas, or Born Abroad to American Parent(s)	657	0.9	3,173	0.8	27,999	1.4
Foreign Born	5,488	7.6	21,379	5.3	145,329	7.1
Total Population	72,419	100.0	402,637	100.0	2,044,773	100.0

<sup>a</sup> For population one year and over.

Source: U.S. Census Bureau American Community Survey 5-year Estimates and SEWRPC

DRAFT

SEWRPC Community Assistance Planning Report No. CA-737-280

CITY OF WAUKESHA COMPREHENSIVE PLAN

## **Appendix E**

# **LAND USE DATA**

## Land Use in the City of Waukesha: 1963-2020

Land Use Category	Acres						
	1963	1970	1980	1990	2000	2010	2020
<b>Developed Land</b>							
Residential							
Single-Family Residential	1,535	1,859	2,704	3,040	3,593	4,093	4,196
Two-Family Residential	96	152	284	322	320	421	474
Multifamily Residential	70	107	308	442	610	690	710
Residential Subtotal	1,701	2,118	3,296	3,804	4,523	5,204	5,380
Commercial	144	198	364	555	770	948	1,053
Industrial	217	338	536	719	921	960	950
Transportation, Communication, and Utilities							
Streets and Highways	654	858	1,339	1,528	2,146	2,481	2,533
Other Transportation, Communication, and Utilities	113	156	248	262	587	645	664
Transportation, Communication, and Utilities Subtotal	767	1,014	1,587	1,790	2,733	3,126	3,197
Governmental and Institutional	319	434	522	551	756	853	882
Recreational	155	196	339	379	466	583	575
Extractive or Landfill	1	41	3	1	2	2	3
Unused Urban Land <sup>a</sup>	473	979	1,229	1,539	1,715	1,564	1,593
Developed Land Subtotal	3,777	5,318	7,876	9,338	11,886	13,240	13,633
<b>Undeveloped Land</b>							
Natural Resource Areas							
Wetlands	137	188	669	791	1,160	1,445	1,557
Woodlands	63	74	105	110	161	354	464
Surface Water	44	61	86	99	122	179	178
Natural Resource Areas Subtotal	244	323	860	1,000	1,443	1,978	2,198
Agricultural and Other Open Land <sup>b</sup>	572	363	609	605	561	861	636
Undeveloped Land Subtotal	816	686	1,469	1,605	2,004	2,839	2,835
<b>Total</b>	<b>4,593</b>	<b>6,004</b>	<b>9,345</b>	<b>10,943</b>	<b>13,890</b>	<b>16,079</b>	<b>16,468</b>

Note: Techniques by which land uses were delineated changed for the year 2000 regional land use inventory. This change involved referencing real property boundary information, which was not available for previous inventories, to delineate land uses to align with actual street and highway rights-of-way (in place of narrower estimated rights-of-way used in prior inventories). Therefore, in comparison to previous regional land use inventories, the year 2000 inventory classified more acreage in transportation, communication, and utilities use and less acreage in land uses adjacent to and traversed by those streets and highways. While the more precise inventories are of greater use to public agencies and private interests throughout the Region, year 2000 and subsequent inventories are not strictly comparable with year 1990 and prior inventories.

<sup>a</sup> Unused urban lands include lands not utilized for an identifiable use that do not encompass important natural resource base elements.

<sup>b</sup> Agricultural and other open lands include areas utilized for the cultivation of crops; areas currently or formerly utilized as or cultivated for pasture for livestock; and areas with farm buildings whose primary use is associated with animal husbandry or agriculture-related equipment storage.

Source: City of Waukesha and SEWRPC

## Proportional Land Use in the City of Waukesha: 1963-2020

Land Use Category	Percent of Lands Within the City						
	1963	1970	1980	1990	2000	2010	2020
Developed Land							
Residential							
Single-Family Residential	33.4	31.0	28.9	27.8	25.9	25.5	25.5
Two-Family Residential	2.1	2.5	3.0	2.9	2.3	2.6	2.9
Multifamily Residential	1.5	1.8	3.3	4.0	4.4	4.3	4.3
Residential Subtotal	37.0	35.3	35.3	34.8	32.6	32.4	32.7
Commercial	3.1	3.3	3.9	5.1	5.5	5.9	6.4
Industrial	4.7	5.6	5.7	6.6	6.6	6.0	5.8
Transportation, Communication, and Utilities							
Streets and Highways	14.2	14.3	14.3	14.0	15.4	15.4	15.4
Other Transportation, Communication, and Utilities	2.5	2.6	2.7	2.4	4.2	4.0	4.0
Transportation, Communication, and Utilities Subtotal	16.7	16.9	17.0	16.4	19.7	19.4	19.4
Governmental and Institutional	6.9	7.2	5.6	5.0	5.4	5.3	5.4
Recreational	3.4	3.3	3.6	3.5	3.4	3.6	3.5
Extractive or Landfill	0.0	0.7	0.0	0.0	0.0	0.0	0.0
Unused Urban Land <sup>a</sup>	10.3	16.3	13.2	14.1	12.4	9.7	9.7
Developed Land Subtotal	82.2	88.6	84.2	85.3	85.6	82.3	82.8
Undeveloped Land							
Natural Resource Areas							
Wetlands	3.0	3.1	7.2	7.2	8.4	9.0	9.5
Woodlands	1.4	1.2	1.1	1.0	1.2	2.2	2.8
Surface Water	1.0	1.0	0.9	0.9	0.9	1.1	1.1
Natural Resource Areas Subtotal	5.3	5.4	9.2	9.1	10.4	12.3	13.3
Agricultural and Other Open Land <sup>b</sup>	12.5	6.0	6.5	5.5	4.0	5.4	3.9
Undeveloped Land Subtotal	17.8	11.4	15.7	14.7	14.4	17.7	17.2
Total	100.0	100.0	100.0	100.0	100.0	100.0	100.0

Note: To address that the size of the City of Waukesha has grown over the years and that direct comparisons of the number of acres of each land use presented in the previous table is only approximate, this table presents the percentage of each land use in relation to that inventory year.

<sup>a</sup> Unused urban lands include lands not utilized for an identifiable use that do not encompass important natural resource base elements.

<sup>b</sup> Agricultural and other open lands include areas utilized for the cultivation of crops; areas currently or formerly utilized as or cultivated for pasture for livestock; and areas with farm buildings whose primary use is associated with animal husbandry or agriculture-related equipment storage.

Source: City of Waukesha and SEWRPC

## Historic and Projected Population and Household Levels in City of Waukesha: 1960-2050

Year	Population			Households			Median Household Size
	Total	Change		Total	Change		
		Number	Percent		Number	Percent	
1960	30,004	--	--	8,572	--	--	3.5
1970	40,271	10,267	34.2	11,748	3,176	37.1	3.4
1980	50,365	10,094	25.1	17,644	5,896	50.2	2.9
1990	56,894	6,529	13.0	21,235	3,591	20.4	2.7
2000	64,825	7,931	13.9	25,663	4,428	20.9	2.5
2010	70,718	5,893	9.1	28,295	2,632	10.3	2.5
2020	71,758	440	0.6	29,704	1,409	5.0	2.4
2050	96,290	25,132	35.3	38,450	9,746	32.8	2.5

Source: U.S. Bureau of the Census and SEWRPC.

DRAFT

SEWRPC Community Assistance Planning Report No. CA-737-280

CITY OF WAUKESHA COMPREHENSIVE PLAN

## **Appendix F**

# **HOUSING DATA**

**Population and Households in the City of Waukesha: 1950-2020**

Year	Population		Households		Household Size	
	Number	Percent Change	Number	Percent Change	Number	Percent Change
1950	21,233	--	5,782	--	3.42	--
1960	30,004	41.3	8,572	48.3	3.33	-2.6
1970	40,258	34.2	11,748	37.1	3.29	-1.2
1980	50,319	25.0	17,644	50.2	2.76	-16.1
1990	56,958	13.2	21,235	20.4	2.59	-6.2
2000	64,825	13.8	25,663	20.9	2.43	-6.2
2010	70,718	9.1	28,295	10.3	2.40	-1.2
2020	71,158	0.6	30,097	6.4	2.31	-3.7

Source: U.S. Census Bureau and SEWRPC

## Number of Housing Units by Tenure in the City, County, and Region: 2020

Area	Owner-Occupied		Renter-Occupied		Vacant		Total	
	Housing Units	Percent of Total	Housing Units	Percent of Total	Housing Units	Vacancy Rate	Housing Units	Percent of Total
City of Waukesha	16,888	56.9	12,816	43.1	1,214	4.1	29,704	100.0
Waukesha County	121,773	76.2	38,007	23.8	6,923	4.3	159,780	100.0
Southeastern Wisconsin Region	503,926	58.0	314,167	42.0	69,125	8.5	887,218	100.0

Note: Data are based on the 2016-2020 American Community Survey (ACS).

Source: U.S. Bureau of the Census and SEWRPC



## Vacant Housing Units by Tenure in the City, County, and Region: 2020

Tenure of Housing Units	City of Waukesha		Waukesha County		Southeastern Wisconsin Region	
	Number of Housing Units	Percent of Vacant Units	Number of Housing Units	Percent of Vacant Units	Number of Housing Units	Percent of Vacant Units
Year-Round Vacant <sup>a</sup>						
For Rent	563	46.4	1,495	21.6	17,503	25.3
Rented, Not Occupied	46	3.8	294	4.2	2,597	3.8
For Sale Only	48	4.0	915	13.2	5,296	7.7
Sold, Not Occupied	92	7.6	475	6.9	2,401	3.5
For Seasonal, Recreational, or Occasional Use	85	7.0	2,169	31.3	17,224	24.9
For Migrant Workers	--	--	--	--	25	--
Subtotal	834	68.7	5,348	77.2	45,046	65.2
Other Vacant <sup>b</sup>	380	31.3	1,575	22.8	24,079	34.8
Total	1,214	100.0	6,923	100.0	69,125	100.0

Note: Data are based on the 2016-2020 American Community Survey (ACS).

<sup>a</sup> Year-round vacant housing units are units for rent, for sale, rented or sold but not yet occupied, occasional use, or temporarily occupied by persons with a usual residence elsewhere.

<sup>b</sup> A housing unit is classified as other vacant when it does not fit into any other year-round vacant category. Common reasons a housing unit is labeled other vacant is that no one lives in the unit and the owner either does not want to rent or sell, is using the unit for storage, or is elderly and living in a nursing home with family members. Additional reasons may be that the unit is being held for settlement of an estate or is being repaired or renovated. Other vacant units may also be under foreclosure, though foreclosures may appear in any of the vacant or occupied categories.

Source: U.S. Bureau of the Census and SEWRPC

## Housing Units by Structure Type for the City, County, and Region: 2020

Residential Structure Type	City of Waukesha		Waukesha County		Southeastern Wisconsin Region	
	Number	Percent	Number	Percent	Number	Percent
Detached Single-Unit Structure	15,521	50.2	116,181	69.7	512,913	57.8
Attached Two-Unit Structure/ Townhome	4,150	13.4	14,430	8.7	138,535	15.6
Attached Multiple-Unit Building						
3 or 4 Units	2,071	6.7	5,291	3.2	42,239	4.8
5 to 9 Units	1,770	5.7	9,071	5.4	53,177	6.0
10 to 19 Units	1,788	5.8	4,956	3.0	32,691	3.7
20 to 49 Units	3,443	11.1	8,772	5.3	47,008	5.3
50 or More Units	2,074	6.7	7,099	4.3	51,579	5.8
Subtotal Multiple-Unit Building	11,146	36.1	35,189	21.1	226,694	25.6
Mobile Home or Other Structure	101	0.3	903	0.5	9,076	1.0
<b>Total Housing Units</b>	<b>30,918</b>	<b>100.0</b>	<b>166,703</b>	<b>100.0</b>	<b>887,218</b>	<b>100.0</b>

Note: Data are based on the 2016-2020 American Community Survey (ACS).

Source: U.S. Bureau of the Census and SEWRPC

## Housing in the City, County, and Region and Median National Cost of Rent by Year Built: 2020

Year Built	City of Waukesha		Waukesha County		Southeastern Wisconsin Region		Median Rent (\$)ª
	Number	Percent	Number	Percent	Number	Percent	
2014 or later	566	1.8	5,146	3.1	16,318	1.8	1,450
2010 to 2013	457	1.5	3,669	2.2	12,929	1.5	1,280
2000 to 2009	4,189	13.5	22,290	13.4	82,201	9.3	1,263
1990 to 1999	5,728	18.5	33,733	20.2	104,051	11.7	1,122
1980 to 1989	3,687	11.9	20,157	12.1	71,370	8.0	1,073
1970 to 1979	5,739	18.6	27,374	16.4	115,148	13.0	1,005
1960 to 1969	3,097	10.0	18,468	11.1	100,830	11.4	1,038
1950 to 1959	2,818	9.1	18,237	10.9	135,553	15.3	1,051
1940 to 1949	836	2.7	4,869	2.9	58,388	6.6	1,014
1939 or earlier	3,801	12.3	12,760	7.7	190,430	21.5	1,057
Total/Overall	30,918	100.0	166,703	100.0	887,218	100.0	1,096

Note: All data are based on the 2016-2020 American Community Survey (ACS). Data for housing units by year built are for all housing units regardless of tenure, i.e., both owner-occupied and rental housing units. Median rent data by year built are for renter-occupied housing units nationwide for which cash rent is paid.

ª In 2020 U.S. dollars.

Source: U.S. Bureau of the Census and SEWRPC

Conditions of Residential Structures: YEAR [to be provided by City]

Residential Building Type	Building Condition							Total
	Excellent	Very Good	Good	Average	Fair	Poor	Very Poor	
Single-Unit Structure	-	153	3,082	14,261	789	36	11	18,332
Two-Unit Structure	-	1	56	803	43	3	-	906
Apartment Structure								
Two- to Three-Unit	-	2	63	357	115	11	2	550
Four or more units	-	-	149	328	47	8	2	534
Manufactured Home	-	-	19	46	16	3	8	92
Total	-	156	3,369	15,795	1,010	61	23	20,414

Source: City of Waukesha and SEWRPC.

**Monthly Gross Contract Rent Costs for Renter-Occupied Housing Units in the City, County, and Region: 2020**

<b>Monthly Gross Rent</b>	<b>City of Waukesha</b>		<b>Waukesha County</b>		<b>Southeastern Wisconsin Region</b>	
	Number	Percent	Number	Percent	Number	Percent
With Cash Rent						
Less than \$300	393	3.1	931	2.4	14,275	4.5
\$300 to \$499	691	5.4	1,379	3.6	19,745	6.3
\$500 to \$749	2,654	20.7	6,166	16.2	102,800	32.7
\$750 to \$999	5,457	42.6	12,437	32.7	94,004	29.9
\$1,000 to \$1,499	3,163	24.7	11,957	31.5	57,957	18.4
\$1,500 or More	305	2.4	4,283	11.3	17,229	5.5
With Cash Rent Subtotal	12,663	98.8	37,153	97.8	306,010	97.4
No Cash Rent	153	1.2	854	2.2	8157	2.6
<b>Total</b>	<b>12,816</b>	<b>100.0</b>	<b>38,007</b>	<b>100.0</b>	<b>314,167</b>	<b>100.0</b>

Note: Data are based on the 2016-2020 American Community Survey (ACS).

Source: U.S. Bureau of the Census and SEWRPC

**Monthly Owner Costs for Specified Housing Units with a Mortgage in the City, County, and Region: 2020**

Monthly Mortgage Cost	City of Waukesha		Waukesha County		Southeastern Wisconsin Region	
	Number	Percent	Number	Percent	Number	Percent
Under \$700	165	1.3	1,272	1.5	9,127	2.2
\$700 to \$799	153	1.2	1,005	1.2	9,082	2.2
\$800 to \$899	282	2.3	1,418	1.7	12,675	3.0
\$1,000 to \$1,249	1,785	14.5	7,488	9.1	57,276	13.7
\$1,250 to \$1,499	2,191	17.8	10,697	13.0	67,181	16.1
\$1,500 to \$1,999	4,159	33.7	24,331	29.5	117,693	28.2
\$2,000 to \$2,499	2,110	17.1	16,531	20.1	64,767	15.5
\$2,500 or more	1,066	8.7	17,644	21.4	62,415	15.0
Total	12,323	100.00	82,365	100.00	416,634	100.00

Note: Data are based on the 2016-2020 American Community Survey (ACS).

Source: U.S. Bureau of the Census and SEWRPC

DRAFT

SEWRPC Community Assistance Planning Report No. CA-737-280

CITY OF WAUKESHA COMPREHENSIVE PLAN

## **Appendix G**

# **ECONOMIC DEVELOPMENT DATA**

## Employment Status of the Civilian Labor Force of the City, County, and Region: 2010, 2015, and 2020

City of Waukesha						
Employment Status	2010		2015		2020	
	Number of People	Percent of Total	Number of People	Percent of Total	Number of People	Percent of Total
In Civilian Labor Force	40,567	73.7	40,902	72.0	42,738	71.3
Employed	38,403	69.8	38,812	68.3	41,432	69.1
Unemployed	2,164	3.9	2,090	3.7	1,306	2.2
Unemployment Rate	5.3	--	5.1	--	3.1	--
Not in Labor Force	14,475	26.3	15,870	28.0	17,224	28.7
Total	55,042	100.0	56,772	100.0	59,962	100.0

Waukesha County						
Employment Status	2010		2015		2020	
	Number of People	Percent of Total	Number of People	Percent of Total	Number of People	Percent of Total
In Civilian Labor Force	216,029	71.1	218,670	69.2	222,484	67.9
Employed	205,653	67.7	209,461	66.3	215,753	65.8
Unemployed	10,376	3.4	9,209	2.9	6,731	2.1
Unemployment Rate	4.8	--	4.2	--	3.0	--
Not in Labor Force	87,935	28.9	97,132	30.8	105,147	32.1
Total	303,964	100.0	315,802	100.0	327,631	100.0

Southeastern Wisconsin Region						
Employment Status	2010		2015		2020	
	Number of People	Percent of Total	Number of People	Percent of Total	Number of People	Percent of Total
In Civilian Labor Force	1,070,576	68.6	1,077,607	67.2	1,076,726	66.0
Employed	989,383	63.4	996,119	62.1	1,030,000	63.2
Unemployed	81,193	5.2	81,488	5.1	46,726	2.8
Unemployment Rate	7.58	--	7.56	--	4.3	--
Not in Labor Force	490,126	31.4	526,804	32.8	553,607	34.0
Total	1,560,702	100.0	1,604,411	100.0	1,630,333	100.0

Note: Labor force data in this table includes area residents 25 years of age and older who are either employed or are unemployed and actively seeking employment. Data are based on the 2006-2010, 2011-2015, and 2016-2020 American Community Survey.

Source: U.S. Census Bureau and SEWRPC



## Occupation of Residents of the City, County, and Region: 2020

Occupation	City of Waukesha		Waukesha County		Southeastern Wisconsin Region	
	Number	Percent of Total	Number	Percent of Total	Number	Percent of Total
Management, Business, and Financial	6,368	15.4	44,318	20.5	162,474	15.8
Computer, Engineering, and Science	3,407	8.2	17,374	8.1	62,865	6.1
Education, Legal, Community Service, Arts, and Media	4,428	10.7	23,017	10.7	108,443	10.5
Healthcare Practitioners and Technical	2,664	6.4	17,879	8.3	67,672	6.6
Healthcare Support	1,351	3.3	4,874	2.3	40,913	4.0
Protective Service	535	1.3	2,775	1.3	18,033	1.8
Food Preparation and Serving Related	2,720	6.6	10,153	4.7	56,003	5.4
Building and Grounds Cleaning and Maintenance	1,287	3.1	4,724	2.2	32,760	3.2
Personal Care and Service	997	2.4	4,489	2.1	25,308	2.5
Sales and Office	9,554	23.1	49,086	22.8	219,393	21.3
Farming, Fishing, and Forestry	69	0.2	301	0.1	3,099	0.3
Construction and Extraction	1,230	3.0	7,589	3.5	39,468	3.8
Installation, Maintenance, and Repair	1,204	2.9	5,356	2.5	27,341	2.7
Production, Transportation, and Material Moving	5,618	13.6	23,818	11.0	166,228	16.1
<b>Total</b>	<b>41,432</b>	<b>100.0</b>	<b>215,753</b>	<b>100.0</b>	<b>1,030,000</b>	<b>100.0</b>

Note: Data are based on the 2016-2020 American Community Survey (ACS).

Source: U.S. Bureau of the Census and SEWRPC

**Per Capita Personal Income for Counties Within the Southeastern Wisconsin Region  
and for the State and Nation: 2018-2020**

<b>Geography</b>	<b>Per Capita Personal Income (dollars)</b>			<b>Rank in State</b>
	2018	2019	2020	2020
Kenosha	46,964	48,550	51,229	30
Milwaukee	46,792	48,107	51,002	31
Ozaukee	82,753	85,526	87,395	1
Racine	49,191	50,729	53,094	25
Walworth	49,623	51,156	53,546	21
Washington	58,412	59,878	62,506	5
Waukesha	71,918	73,883	75,958	2
Wisconsin	51,250	52,918	55,593	--
United States	54,098	56,047	59,510	--

Source: U.S. Bureau of Economic Analysis and SEWRPC

## Total Jobs Within the City and Region: 2010, 2015, and 2019

Geographic Area	2010		2015		2019	
	Total Jobs	Percent of Jobs in Region	Total Jobs	Percent of Jobs in Region	Total Jobs	Percent of Jobs in Region
Kenosha County	77,060	7.5	82,773	8.2	86,204	8.9
Milwaukee County	429,808	42.1	448,993	44.4	445,487	46.2
Ozaukee County	44,157	4.3	46,393	4.6	47,492	4.9
Racine County	90,325	8.8	93,644	9.3	94,146	9.8
Walworth County	51,392	5.0	54,266	5.4	55,686	5.8
Washington County	69,648	6.8	73,109	7.2	74,867	7.8
Waukesha County	202,455	19.8	212,689	21.0	217,978	22.6
City of Waukesha	37,937	3.7	39,903	3.9	40,299	4.2
Southeastern Wisconsin Region	1,021,860	100.0	1,011,867	100.0	964,845	100.0

Source: Wisconsin Department of Workforce Development and SEWRPC.

DRAFT

SEWRPC Community Assistance Planning Report No. CA-737-280

CITY OF WAUKESHA COMPREHENSIVE PLAN

## **Appendix H**

# **TRANSPORTATION AND MOBILITY**

**Roadway Mileage by Functional Classification and Jurisdiction in the City of Waukesha**

Functional Classification	Roadway Mileage			Total Miles
	Local Jurisdiction	County Jurisdiction	State Jurisdiction	
Arterial	43.54	14.32	13.03	70.89
Collector	18.7	0	0	18.7
Local	189.57	0.12	0	189.69
Total	251.81	14.44	13.03	279.28

Source: SEWRPC

## Bridges in the City of Waukesha

Bridge Location and Crossing	Characteristics					
	Owner	Year Built	Average Daily Traffic (ADT)	ADT Year	Sufficiency Rating <sup>a</sup>	Rating Date
Barstow St Over Fox River	City	1963	10700	2018	79.4	1/10/2020
Madison St Over Fox River	City	1968	8200	2018	64	8/27/2021
Prairie Ave Over Fox River	City	1974	9800	2018	87.5	9/1/2020
Wisconsin Ave Over Fox River	City	1982	9200	2018	97.6	7/18/2019
Moreland Blvd Eastbound Over Fox River	City	1982	20100	2018	65.5	10/12/2009
Moreland Blvd Westbound Over Fox River	City	1996	20100	2018	92.3	10/12/2009
Madison St Over Pebble Creek	City	2016	700	2009	100	4/26/2016
CTH H (River Road) Over Fox River	County	1966	3500	2018	80.1	1/12/2010
CTH X (Genesee Road) Over Wisconsin & Southern Railroad	County	1970	16850	2018	95.8	2/8/2010
CTH X (Genesee Road) Over Pebble Creek	County	2019	8550	2018	97.6	6/23/2017
CTH X (Genesee Road) Over Pebble Creek	County	2019	8650	2018	97.6	6/23/2017
STH 59 Eastbound Over Fox River	State	1974	9300	2018	96.2	11/5/2004
STH 59 Westbound Over Fox River	State	1996	9300	2018	96.1	7/29/2019
CTH T Over IH 94	State	1995	18900	2019	91.2	6/27/2013
STH 59 Eastbound Over Canadian National Railroad	State	1999	11800	2018	99.4	7/16/1997
STH 59 Westbound Over Canadian National Railroad	State	1999	11600	2018	99.5	7/16/1997
STH 318 Over IH 94	State	2000	9400	2019	98.7	6/27/2013
USH 18 Westbound Over Wetlands	State	2019	6100	2020	99.7	11/1/2017
USH 18 Eastbound Over Wetlands	State	2019	7200	2020	99.7	11/1/2017
USH 18 Westbound Over Wetlands	State	2019	6100	2020	99.7	11/1/2017

<sup>a</sup> Under WisDOT's Local Bridge Improvement Assistance program, municipalities are eligible for rehabilitation funding on bridges with sufficiency ratings less than 80, and replacement funding on bridges with sufficiency ratings less than 50.

Source: Wisconsin Department of Transportation and SEWRPC

## Existing On-Street Bicycle Facilities in the City of Waukesha

Facility Type	Street Name	From	To	Length
Bicycle Lane	Moreland Blvd	Main St	IH 94/City Limits	0.89
	Moreland Blvd	Michigan Ave	Motor Ave	0.64
	North St	Pewaukee Rd	Moreland Blvd	0.32
	St. Paul Ave	Madison St	Moreland Blvd	0.95
	Madison St	Comanche Ln	Grandview Blvd	1.10
	Wisconsin Ave	West Ave	East Ave	0.50
	East Ave	College Ave	Sunset Dr	1.01
	Sunset Dr	East Ave	Les Paul Parkway (USH 18)	0.90
Separate Path within	Meadowbrook Rd (STH 318)	IH 94/City Limits	Summit Ave/USH 18	1.96
Road Right-of-Way	Les Paul Parkway (USH 18)	Summit Ave/USH 18	Sunset Dr	2.43
	St. Paul Ave	Sunset Dr	Harris Highland Dr	1.26
Wide Paved Shoulders	Grandview Blvd	Golf Rd	Fatima Dr/City Limits	0.76
	Silvernail Rd	Grandview Blvd	Bluemound Rd	1.16
	Bluemound Rd	IH 94/City Limits	Pewaukee Rd (CTH J)	0.73
	Summit Ave	Les Paul Parkway (USH 18)	University Dr	0.84
	Moreland Blvd	Manhattan Dr	Main St	0.91
	St. Paul Ave	Harris Highland Dr	Moreland Blvd	0.11
	Sunset Dr	Les Paul Parkway (USH 18)	St. Paul Ave	0.88
	West Ave	Newhall Ave	Sunset Dr	0.78
	Les Paul Parkway (USH 18)	Sunset Dr (west side)	Sunset Dr (east side)	4.46
	Genesee Rd	Ridge Rd	City Limits	0.47
	Saylesville Rd	Genesee Rd (STH 59)	Elkhart Dr	0.17
	STH 164	Les Paul Parkway (USH 18)	City Limits	0.27
	Racine Ave (CTH Y)	Sunset Dr	City Limits	0.98
			Total	24.48

Source: SEWRPC

**Existing Off-Street Paths in the City of Waukesha**

<b>Off-Street Path</b>	<b>From</b>	<b>To</b>	<b>Length</b>
Fox River Trail	Barstow St (both sides of river)	Moreland Blvd	1.51
	Dunbar Ave (near RR crossing)	Barstow St	0.89
	College Ave/Prairie Ave intersection	City Limits	4.44
New Berlin Trail	Lincoln Ave (end of trail)	City Limits	0.34
New Berlin Connector	Barstow St	New Berlin Trail	1.33
Glacial Drumlin State Trail	City Limits	Fox River Trail (at Sentry Dr)	1.79
Total			10.30

Source: SEWRPC



## Waukesha Metro Transit Route Operating and Service Characteristics: 2019

Service Availability								
Bus Route Number	Bus Route	Round Trip Route Length (miles)	Weekdays		Saturdays		Sundays	
			Start Time First Trip	Start Time Last Trip	Start Time First Trip	Start Time Last Trip	Start Time First Trip	Start Time Last Trip
1	Waukesha/Brookfield	18.6 (Limited service adds 0.7 miles)	5:35 a.m. (Main Street and Manhattan Drive)	9:15 p.m.	8:20 a.m.	8:50 p.m.	9:20 a.m.	5:50 p.m.
2	Arcadian	13.0	5:55 a.m.	8:15 p.m.	8:50 a.m.	7:50 p.m.	9:50 a.m.	5:50 p.m.
3	Hartwell	7.0	6:09 a.m. (Big Bend and Sunset Drive) also extends as Route 7	6:45 p.m.	8:50 a.m. (Route 15 combined)	6:50 p.m.	No service	No service
4	Grand	6.6 (Limited service adds 0.3 miles)	5:55 a.m. (extends as Route 8)	9:15 p.m.	8:50 a.m. (Trips after 7 p.m. extend as Route 7/8)	8:50 p.m.	9:50 a.m. (Trip extends as Route 7/8)	6:50 p.m.
5	Prairie	11.8 (Limited service adds 0.5 miles)	6:30 a.m.	6:15 p.m.	8:50 a.m. (Runs as Route 5/6)	7:50 p.m.	9:50 a.m. (Runs as Route 5/6)	4:50 p.m.
6	St. Paul	17.4 (Limited service adds 2.2 miles)	6:30 a.m.	9:15 p.m.	8:50 a.m. (Runs as Route 5/6)	7:50 p.m.	9:50 a.m. (Runs as Route 5/6)	4:50 p.m.
7	Madison	6.5 (Limited service adds 1.8 miles)	6:30 a.m. (Waukesha Memorial Main Entrance until 12:50 p.m.)	8:45 p.m. (Runs as Rt 7/8 after 6:45 p.m.)	8:20 a.m. (Runs as Route 7/8 and extends on Route 4)	6:20 p.m.	9:20 a.m. (Runs as Route 7/8 and extends on Route 4)	6:20 p.m.
8	Summit	7.5 (Limited service adds 0.5 miles)	5:55 a.m. (Route extends as Route 4)	6:15 p.m. (Runs as Rt 7/8 after 6:45 p.m.)	8:20 a.m. (Runs as Route 7/8 and extends on Route 4)	6:20 p.m.	9:20 a.m. (Runs as Route 7/8 and extends on Route 4)	6:20 p.m.
9	Northview	21.1 (Limited service adds 3.2 miles)	5:55 a.m.	8:15 p.m.	8:50 a.m.	5:50 p.m.	No Service	No Service
15	Racine Avenue	12.7 (Limited service adds 1.3 miles)	6:30 a.m.	6:15 p.m.	8:50 a.m. (Route 3 combined)	6:50 p.m.	No Service	No Service

Service Frequency (Minutes)								
Bus Route Number	Bus Route	Weekdays				Saturday		Sunday
		A.M. Peak (6:00 a.m. - 9:00 a.m.)	Midday (9:00 a.m. - 3:00 p.m.)	P.M. Peak (3:00 p.m. - 6:00 p.m.)	Evening	Daytime (8:00 a.m. - 6:00 p.m.)	Evening (6:00 p.m. - 11:00 p.m.)	All Day
1	Waukesha/Brookfield	30-35	30	30-35	30	30	30	30
2	Arcadian	60-70	60	60-70	60	60	60	60
3	Hartwell	35-70	60	35-70		60	(Runs as 3/15) 60	
4	Grand	30-35	30-35	30-35	60	60	60	60
5	Prairie	60-70	60	60-70		(Runs as 5/6) 60	(Runs as 5/6) 60	(Runs as 5/6) 60
6	St. Paul	60-70	60	60-70		(Runs as 5/6) 60	(Runs as 5/6) 60	(Runs as 5/6) 60
7	Madison	60-70	60	60-70	60	60	(Runs as 7/8) 60	(Runs as 7/8) 60
8	Summit	30-35	30-35	30-35	60	60	(Runs as 7/8) 60	(Runs as 7/8) 60
9	Northview	35-60	30-60	35-60	60	60	60	
15	Racine Avenue	60-70	60	60-70		60	(Runs as 3/15) 60	

Source: Waukesha Metro Transit and SEWRPC

## City-Owned Parking Facilities

Parking Facility	Parking Facility Features		
	Spaces	Restrictions	Address
<b>Surface Lots</b>			
River Lot #1	89 Spaces	--b	On Riverfront Street between Barstow St. & Broadway/Bank St. Intersection
Barstow-Corrina Lot #2	11 Spaces	--a	Near 919 N Barstow St., on the corner of N. Barstow St. and Corrina Blvd.
Clock Tower Lot #3	87 Spaces	--a	Entrances to lot near 916 Clinton St. or 404 W Main St.
Clinton Street Lot #4	114 Spaces	--b	Near 732 Clinton St.
Barstow-Main Lot #5	42 Spaces	--a	On SW Corner of Barstow St. and Main St. near 200 W Main St.
Brook Street Lot #6	18 Spaces	--b	Near 234 Brook St.
Wisconsin Avenue Lot #7	29 Spaces	--c	704 N Grand Ave.
Carroll-Cutler Lot #8	163 Spaces	--b	Near 231 Carroll St.
Gaspar Street Lot #9	19 Spaces	--b	Across from 235 W Broadway, on the corner of Gaspar St. and South St.
Carroll-Maple Lot #11	86 Spaces	--a	Near 321 Wisconsin Ave.
Union Street Lot #12	31 Spaces	--c	Near 101 Union St.
Madison Street Lot #13	26 Spaces	--a	Behind 200 Madison St.
<b>Parking Ramps</b>			
South Street Municipal Parking Ramp	450 Spaces		Near the Rotunda at 241 South St
Transit Center Parking Ramp	482 Spaces		Near City Hall at 212 E. St. Paul Ave.

<sup>a</sup> Overnight parking available by permit

<sup>b</sup> Overnight parking available by permit, but restricted to designated spaces

<sup>c</sup> No overnight parking

Source: City of Waukesha

DRAFT

SEWRPC Community Assistance Planning Report No. CA-737-280

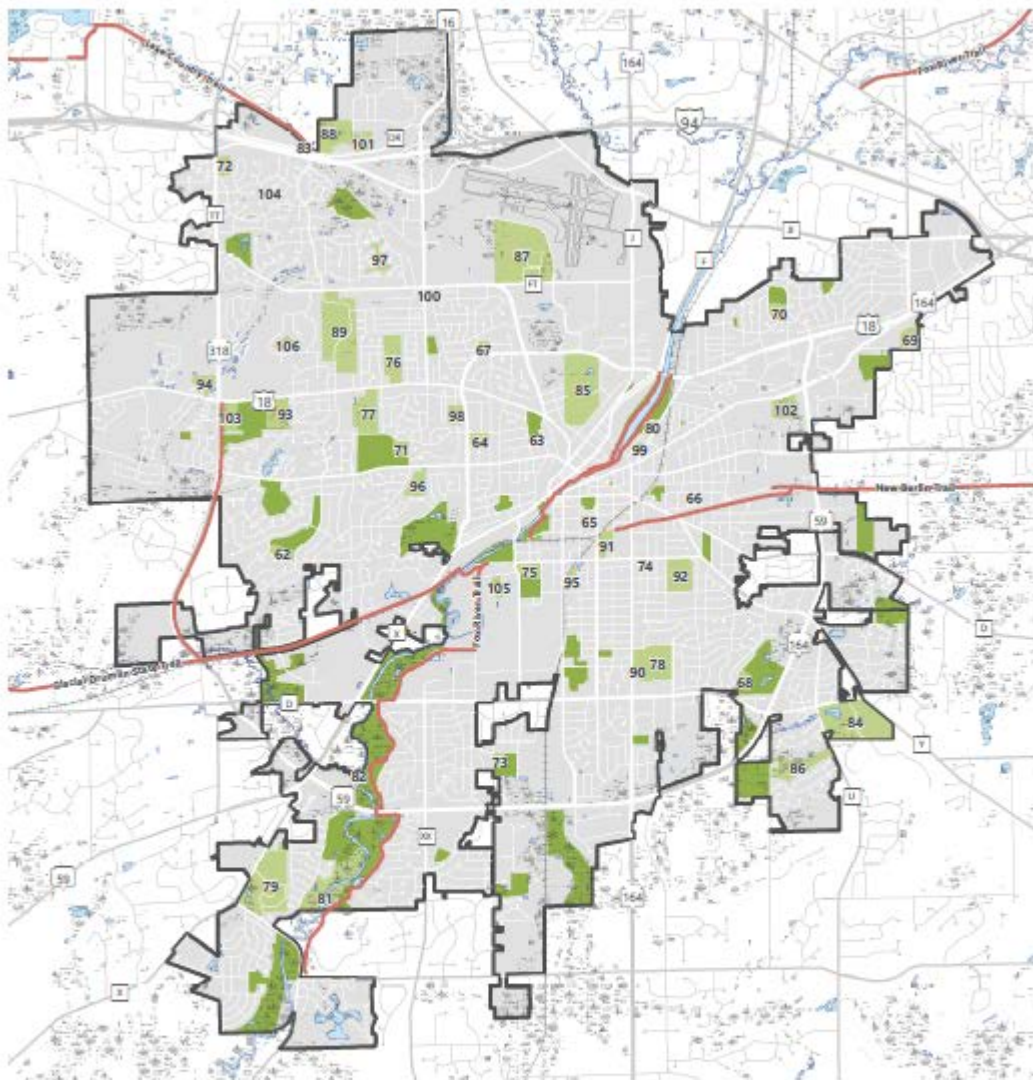
CITY OF WAUKESHA COMPREHENSIVE PLAN

## **Appendix I**

# **PARKS, RECREATION, AND CULTURE**

## Park and Open Space Sites within the City of Waukesha: 2023

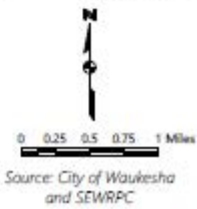
Non City-Owned Park and Open Space Sites in the City of Waukesha



- CITY-OWNED PARK AND OPEN SPACE SITE
- 1 PARK AND OPEN SPACE UNDER OTHER OWNERSHIP
- WETLAND

- EXISTING OFF-STREET TRAIL
- SURFACE WATER

Note: Non City-owned site numbers correspond to the accompanying table in Appendix 7.



**Other Public and Private Park and Open Space Sites in the City of Waukesha by Ownership: 2023**

<b>Map 7.1 ID</b>	<b>Site Name</b>	<b>Size (acres)</b>
<b>School District of Waukesha</b>		
51	Bethesda School	9.7
52	Blair School	2.3
53	Butler Middle School	8.6
54	Central Middle School	5.6
55	Hadfield School	3.1
56	Hawthorne School	6.5
57	Heyer School	7.1
58	Hillcrest School	12.5
59	Horning Middle and Banting Schools	10.1
60	Lowell School	8.6
61	Meadow Brook School	9.1
62	Prairie School	4.6
63	Randall School	2.8
64	Saratoga School	10.6
65	Summit View School	27.9
66	Waukesha North High School	33.5
67	Waukesha South High School and Whittier School	41.1
68	Waukesha West High School	79.1
69	White Rock School	3.4
Subtotal: 19 Sites		286.2
<b>County-Owned</b>		
70	Fox River Park	61.9
71	Fox River Parkway	1.3
72	Lake Country Recreational Trail	0.9
73	Minooka Park	78.6
74	Moor Downs Golf Course	75.0
75	Pebble Brook Greenway	29.5
76	Waukesha County Expo Center	115.3
Subtotal: 7 Sites		362.5
<b>State-Owned</b>		
77	DNR-Statewide Wetland Mitigation Program <sup>a</sup>	32.9
78	University of Wisconsin-Waukesha	84.6
Subtotal: 2 Sites		117.5

Table continued on following page.

<b>Map 7.1 ID</b>	<b>Site Name</b>	<b>Size (acres)</b>
<b>Under Ownership of a Private Organization</b>		
79	Beautiful Savior Church and School	3.4
80	Carroll College Athletic Fields	12.6
81	Catholic Memorial High School	28.6
82	Christ the Life Lutheran Church	28.7
83	Faith Baptist Church	7.2
84	Haertel Field	5.7
85	Mount Calvary Lutheran School	14.5
86	Pebble Valley Subdivision Park	11.0
87	St. Williams School	10.7
88	Trinity Lutheran School	2.9
89	West Suburban Christian Academy	3.0
Subtotal: 11 Sites		128.3
<b>Commercially Owned</b>		
90	Bright Days Childcare	11.1
91	Swing Time Golf and Baseball	18.0
Subtotal: 2 Sites		29.1
<b>Under Other Private Ownership</b>		
92	Good Times Summer Day Camp	15.1
93	Pebble Valley Subdivision Park	1.3
94	Sullivan's Ball Diamonds	6.9
95	Tallgrass Subdivision Park	6.1
Subtotal: 4 Sites		29.4
Total: 95 Sites		953.0

<sup>a</sup> Site features an easement.

Source: City of Waukesha and SEWRPC

## Historic Places Within the City of Waukesha: 2023

Map 7.2 ID	Name	Site or District	NRHP Designation <sup>a</sup>
1	Acme/Carleton Spring	S	--
2	Alexander Cook House	S	1983
3	Andrew Frame House	S	1982
4	Arcadian Bottling Works	S	1983
5	Arlington Apartments	S	1987
6	Becker and Schafer Store Building	S	1995
7	Bethesda Spring	S	--
8	Block C Downtown Historic District	D	1995
9	C.A. Welch House	S	1982
10	Camillia Smith House	S	1983
11	Caples Park Historic District	D	1998
12	Carroll College Main Academic Buildings	S	1982
13	Carroll College	S	1982
14	Caspar M. Sanger House	S	1983
15	Charles E. Nelson House	S	1990
16	Charles Merten Building	S	1995
17	Chicago and Northwestern Railroad/ Milwaukee & Madison Passenger Depot	S	1995
18	College Avenue Historic District	D	1982
19	Cutler Homestead Site	S	1988
20	Cutler Mound Group/Church St. Mounds	S	1988
21	David J. Hemlock House	S	1983
22	Downtown/Five Points Historic District	D	1995
23	Dr. David Roberts House	S	1983
24	Dr. F.C. Elliot House	S	1982
25	Dr. Volney L. Moore House	S	1982
26	East Broadway Historic District	D	1982
27	Everett P. Barrett House	S	1995
28	First Baptist Church	S	1983
29	First Congregational Church	S	1992
30	First Methodist Church	S	1983
31	First Presbyterian Church	S	--
32	First Reformed German Church	S	1991
33	Frank H. Putney House	S	1983
34	Ganfield Gymnasium	S	1982
35	George Dwinnel House	S	1983
36	Grand View Health Resort/Moor Mud Baths	S	1983
37	Hannah Pratt House	S	1983
38	Hobo Spring	S	--
39	John Howitt House	S	1983
40	John P. Buchner House	S	--

Table continued on following page.

<b>Map 7.2 ID</b>	<b>Name</b>	<b>Site or District</b>	<b>NRHP Designation<sup>a</sup></b>
41	Joseph Fabacker House	S	1995
42	Joseph H. Hadfield House	S	1983
43	Laflin Avenue Historic District	D	1982
44	Lain-Estberg House	S	1974
45	Louis Yanke House/Saloon	S	1982
46	Madison Street Historic District	D	1990
47	Martin Brown House/St. Joseph's Church Convent	S	1983
48	Masonic Temple	S	1983
49	McCall Street Historic District	D	1993
50	Minniska Spring	S	--
51	Moreland Blvd. Pumphouse and Reservoir	S	1996
52	Morey-Andrews House	S	1995
53	Morey-Lewis House	S	1995
54	Morey-Markham House	S	1995
55	Morey-Seidens House	S	1995
56	Morris Cutler House	S	1982
57	National Hotel	S	1982
58	Nickell Building	S	1982
59	Northwestern Hotel	S	1990
60	Old Waukesha County Courthouse	S	1982
61	Patrick J. Buckley House	S	1991
62	Perry Grace House	S	1983
63	Pokrandt Blacksmith Shop	S	1983
64	Putney Block	S	1982
65	Rankin Hall Old Main House	S	1982
66	Resthaven Hotel	S	1982
67	Robert O. Jones House	S	1982
68	Samuel D. James House	S	1996
69	Senator William Blair House	S	1983
70	Silurian Mineral Springhouse - Monument & Spring	S	1982
71	St. Joseph's Church Complex	S	1982
72	St. Matthias Episcopal Church	S	1983
73	Totten-Butterfield House	S	1984
74	W.T. Lyle's Building	S	1982
75	W.T. Lyle's Building	S	1983
76	Walter S. Chandler House	S	1982
77	Waukesha Asbestos Company	S	--
78	Waukesha Mfg. Co./Waukesha Motor Co.	S	--
79	Waukesha Newhall Avenue Pump House and Reservoir	S	1999
80	Waukesha Post Office	S	1983
81	Waukesha Pure Food Company	S	1983
82	William A. Nickell House	S	1982
83	William G. Mann House	S	1983
84	William P. Sloan House	S	1982
85	Wisconsin Avenue Historic District	D	1982
86	Wisconsin Central, Ltd. Depot	S	--
87	Wisconsin Industrial School for Boys	S	1987



<sup>a</sup> *Historic places with no year are locally designated landmarks not listed on the National Registry of Historic Places (NRHP).*

*Source: City of Waukesha, Wisconsin Historical Society, and SEWRPC.*